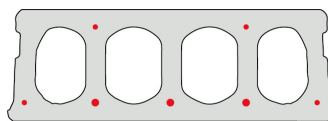
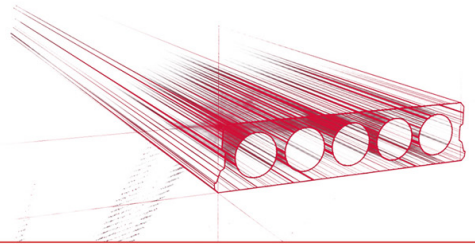


## FS200-600



### Technische info

Hoogte	200mm
Breedte	596mm
Lengte	Wap. S500: 0,70m => 9.00m op bestelling (per 10cm olopend)
Brandweerstand	1 uur & 2uur op bestelling
Milieuklasse	XC1; XC2; XC3 (andere op bestelling)
Transportgewicht	2,92 kN/m <sup>2</sup>
Gewicht/ m	1,75 kN/m
Rekengewicht	3,15 kN/m <sup>2</sup>
Kanaalvulling	12,69 l/m
Vulbeton	9,2 l/m <sup>2</sup>
Betonkwaliteit	C 50/60
Staalkwaliteit	f(pk) 1860; f(p0,1k) 1580

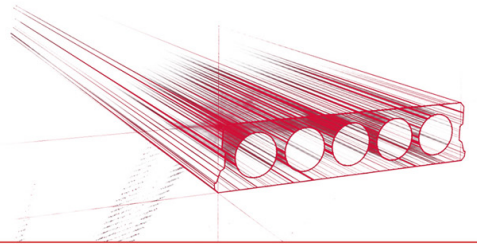


## Overspanningen

---

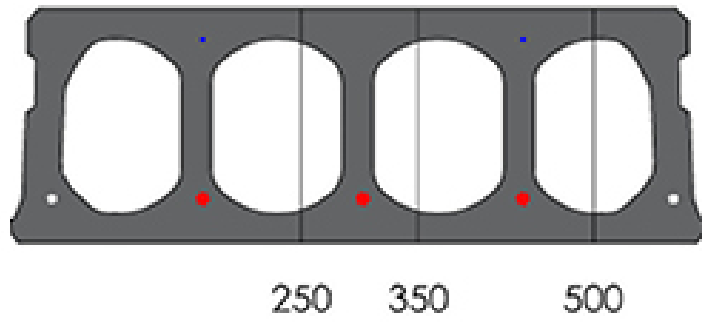
Zie hiervoor onze online rekenmodule

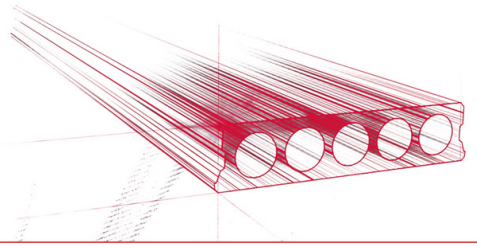




## Pasplaten

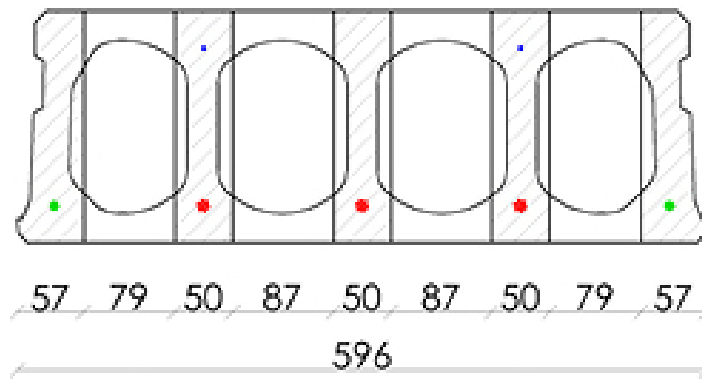
---

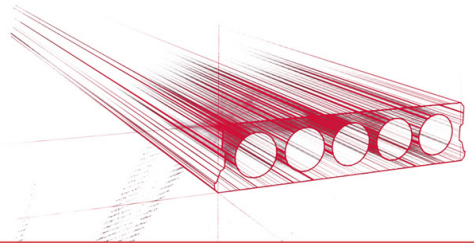




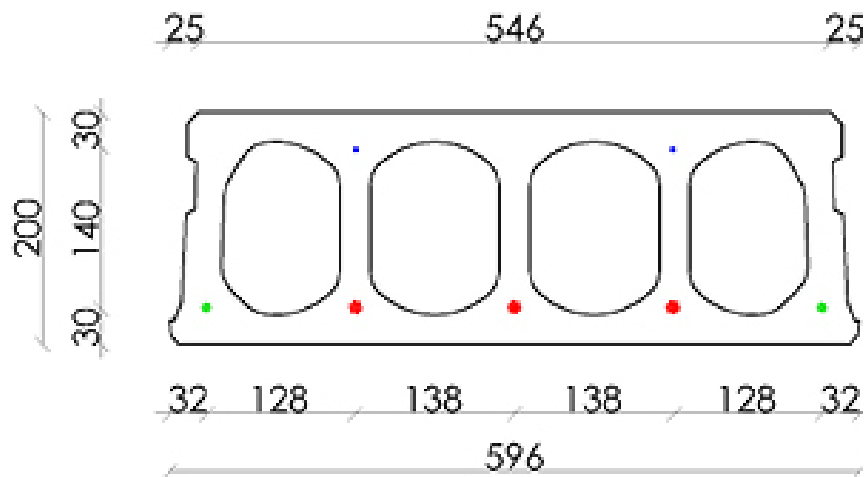
## Booradvies

---





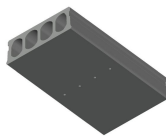
## Wapeningspositie



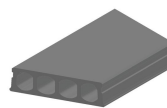
## Supplementen



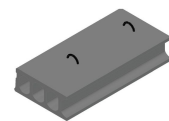
Pasplaten -  
Voorgespannen



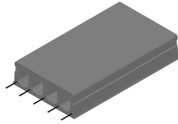
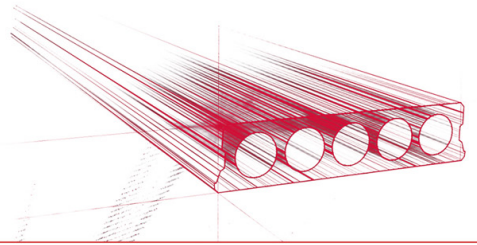
Ontwateringsgaatjes



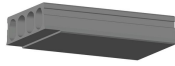
Schuinzagen/inkorten



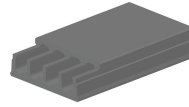
Hijslussen



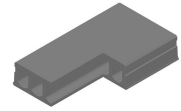
Uitstekende wapening



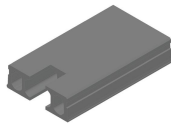
Verdunde onderzijde



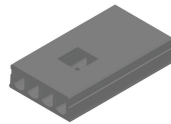
Verdunde bovenzijde



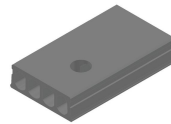
Hoeksparing



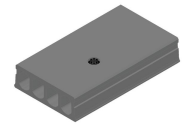
Kopsparing



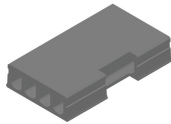
Middensparing



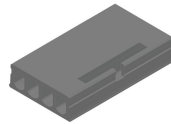
Ronde sparing



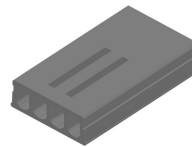
Ronde sparing + CD



Zijsparing



Hamerkop



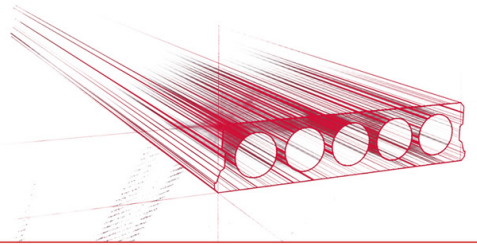
Opengemaakte kanalen



Open kanalen met inhangwapening



Raveelijzers -  
Voorgespannen



## Voorraad

	Productie	Afhaalbaar	Op voorraad
Malle 1		X	
Malle 2	X	X	
Frederickx			
Tessenderlo			

