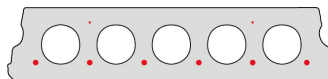


## F130-600



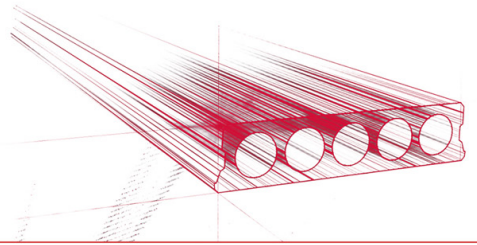
### Technische info

Hoogte	130mm
Breedte	600mm
Lengte	Wap. S350: 0,70m => 5,20m uit voorraad (per 10cm olopend) Wap. S700: 1,90m => 5,20m uit voorraad (per 10cm olopend)
Brandweerstand	1 uur (2u op bestelling)
Milieuklasse	XC1; XC2; XC3 (andere op bestelling)
Transportgewicht	2,12 kN/m <sup>2</sup>
Gewicht/ m	1,27 kN/m
Rekengewicht	2,30 kN/m <sup>2</sup>
Kanaalvulling	3,85 l/m
Vulbeton	7 l/m <sup>2</sup>
Betonkwaliteit	C 40/50
Staalkwaliteit	f(yk) 500; f(tk) 550

### Overspanningen

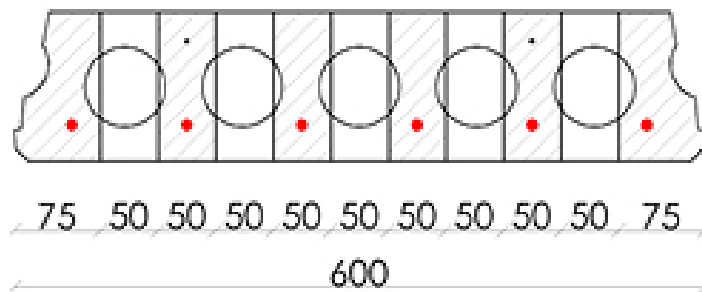
Zie hiervoor onze online rekenmodule

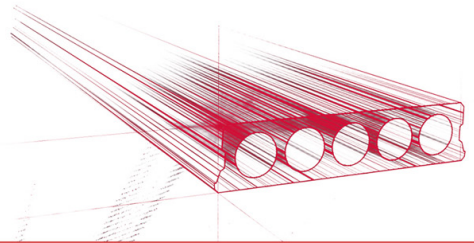




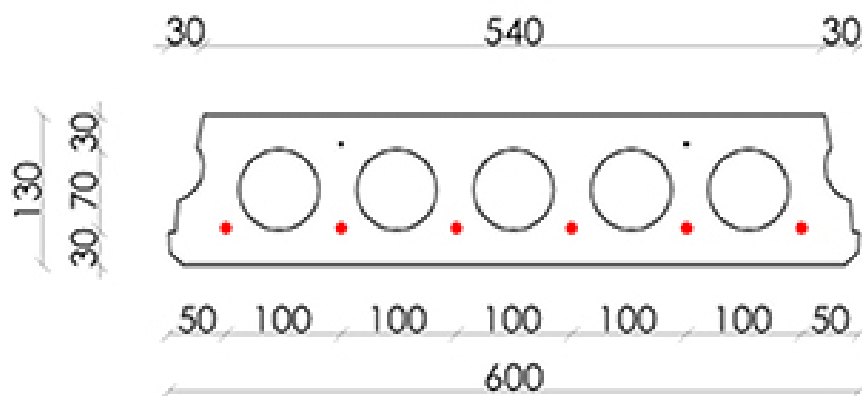
## Booradvies

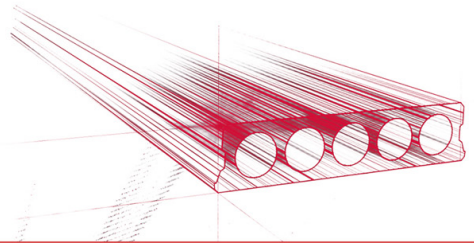
---





## Wapeningspositie



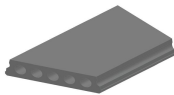


## Supplementen

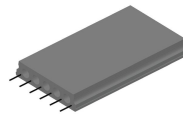
---



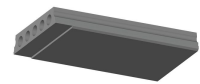
Pasplaten - Gewapend



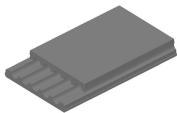
Schuinzagen/inkorten



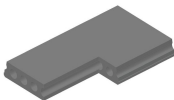
Uitstekende wapening



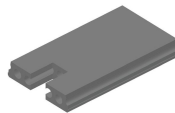
Verdunde onderzijde



Verdunde bovenzijde



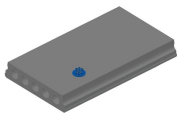
Hoeksparing



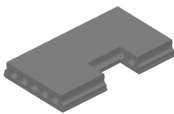
Kopsparing



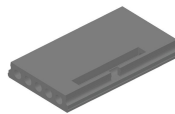
Ronde sparing



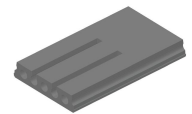
Ronde sparing + CD



Zijsparing



Hamerkop



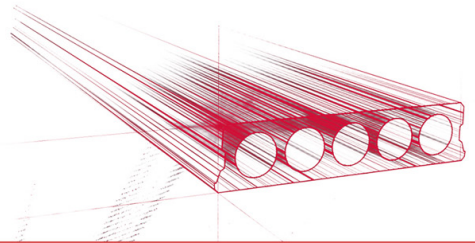
Opengemaakte kanalen



Open kanalen met inhangwapening



Raveelijzers - Gewapend



## Voorraad

	Productie	Afhaalbaar	Op voorraad
Malle 1	X	X	X
Malle 2			
Frederickx			
Tessenderlo			

