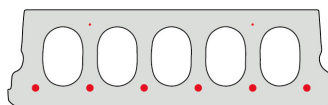


F170-600



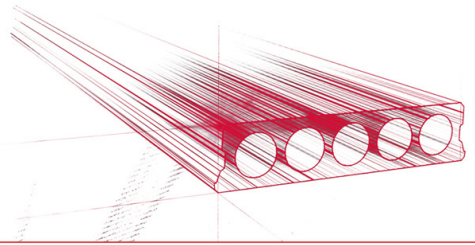
Technische info

Hoogte	173mm
Breedte	600mm
Lengte	Wap. S350: 1,00m => 6,20m uit voorraad (per 10cm olopend) Wap. S700: 5,30m => 5,90m op bestelling (per 10cm olopend)
Brandweerstand	1 uur (2u op bestelling)
Milieuklasse	XC1; XC2; XC3 (andere op bestelling)
Transportgewicht	2,70 kN/m ²
Gewicht/ m	1,62 kN/m
Rekengewicht	3,00 kN/m ²
Kanaalvulling	6,46 l/m
Vulbeton	10 l/m ²

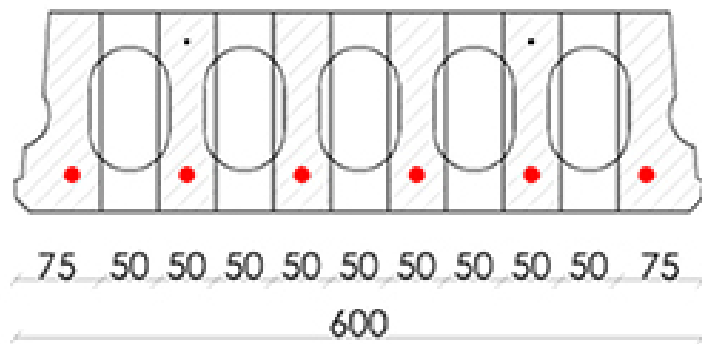
Overspanningen

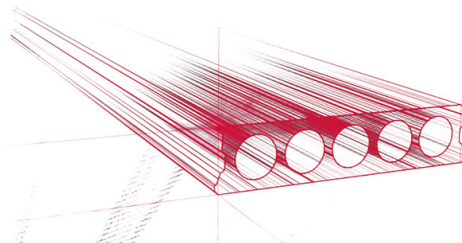
Zie hiervoor onze online rekenmodule



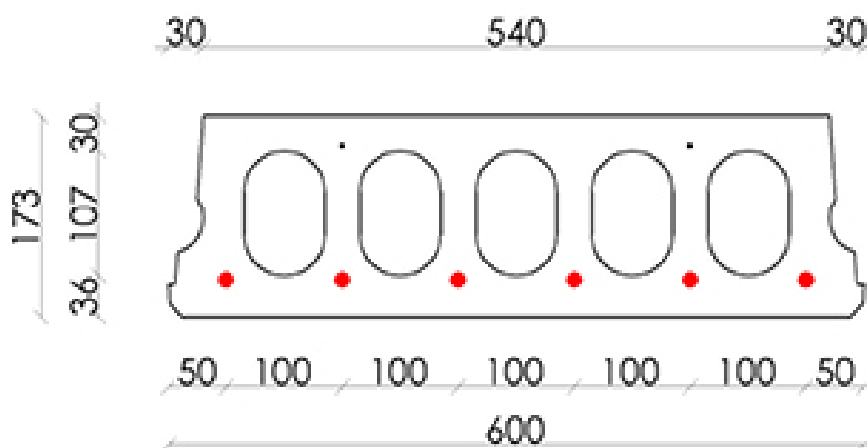


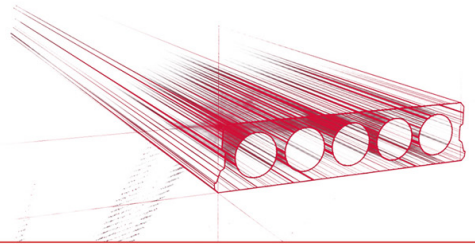
Booradvies





Wapeningspositie

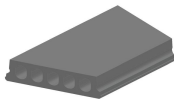




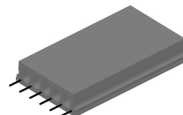
Supplementen



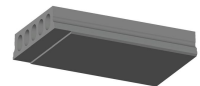
Pasplaten - Gewapend



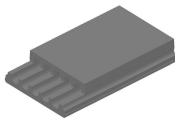
Schuinzagen/inkorten



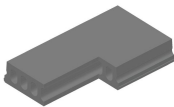
Uitstekende wapening



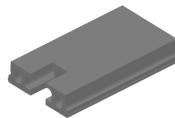
Verdunde onderzijde



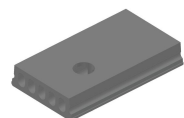
Verdunde bovenzijde



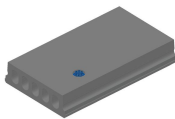
Hoeksparing



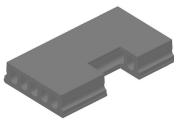
Kopsparing



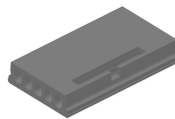
Ronde sparing



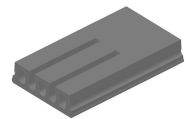
Ronde sparing + CD



Zijsparing



Hamerkop



Opengemaakte kanalen



Open kanalen met
inhangwapening



Raveelijzers - Gewapend



Voorraad

	Productie	Afhaalbaar	Op voorraad
Malle 1	X	X	X
Malle 2			
Frederickx			
Tessenderlo			

